



WALDORF ASTORIA®
RESIDENCES
TEXAS • HILL COUNTRY

FLOOR PLANS



WALDORF ASTORIA®
RESIDENCES
TEXAS • HILL COUNTRY

RESORT VILLA
3 - BEDROOM

SIZE

3,197 AC SF
1,433 Non-AC SF
4,630 SF TOTAL

DETAILS

3 Bedrooms
3.5 Bathrooms

FEATURES

Study
Lock-Off Unit
Outdoor Showers
Multiple Pools
Owner's Closet
Seamless Indoor/Outdoor Living



Statement: We are pledged to the letter and spirit of U.S. policy for the achievement of equal housing throughout the nation. We encourage and support an affirmative advertising, marketing and sales program in which there are no barriers to obtaining housing because of race, color, sex, religion, handicap, familial status or national origin.

Recreational features, structural details and amenities described herein are subject to change periodically. The illustrations included herein are artist renderings of proposed improvements. Any offers contained herein are not directed to residents in any state in which a registration is required but in which registration requirements have not yet been met, including, but not limited to, New Jersey. Recreational features and amenities described herein are subject to change periodically. The illustrations included herein are artist renderings of proposed improvements.

WARNING: THE CALIFORNIA DEPARTMENT OF REAL ESTATE HAS NOT EXAMINED THIS OFFERING, INCLUDING, BUT NOT LIMITED TO, THE CONDITION OF TITLE, THE STATUS OF BLANKET LIENS ON THE PROJECT (IF ANY), ARRANGEMENTS TO ASSURE PROJECT COMPLETION, ESCROW PRACTICES, CONTROL OVER PROJECT MANAGEMENT, RACIALLY DISCRIMINATORY PRACTICES (IF ANY), TERMS, CONDITIONS, AND PRICE OF THE OFFER, CONTROL OVER ANNUAL ASSESSMENTS (IF ANY), OR THE AVAILABILITY OF WATER, SERVICES, UTILITIES, OR IMPROVEMENTS. IT MAY BE ADVISABLE FOR YOU TO CONSULT AN ATTORNEY OR OTHER KNOWLEDGEABLE PROFESSIONAL WHO IS FAMILIAR WITH REAL ESTATE AND A LAW IN THE COUNTRY WHERE THIS SUBDIVISION IS SITUATED.

Waldorf Astoria is a registered trademark of Hilton International Holding LLC, an affiliate of Hilton Worldwide Holdings Inc. (together with its affiliates, "Hilton"). The Waldorf Astoria Residences Texas Hill Country and Waldorf Astoria Resort Villas Texas Hill Country (the "Residences") are not owned, developed or sold by Hilton, and Hilton does not make any representations, warranties or guaranties whatsoever with respect to the Residences or related development. Wine Country Hospitality Partners, LLC ("Developer") uses the Waldorf Astoria brand name and certain Waldorf Astoria trademarks (the "Trademarks") under a limited, non-exclusive, non-transferable license from Hilton. The license may be terminated or may expire without renewal, in which case the Residences will not be identified as a Waldorf Astoria branded project and the Developer will not have any rights to use the Trademarks.



WALDORF ASTORIA®
RESIDENCES
TEXAS • HILL COUNTRY

RESORT VILLA
4 - BEDROOM

SIZE

3,420 AC SF

1,352 Non-AC SF

4,772 SF TOTAL

DETAILS

4 Bedrooms

4.5 Bathrooms

FEATURES

Lock-Off Unit

Outdoor Showers

Multiple Pools

Owner's Closet

Seamless Indoor/Outdoor Living



Statement: We are pledged to the letter and spirit of U.S. policy for the achievement of equal housing throughout the nation. We encourage and support an affirmative advertising, marketing and sales program in which there are no barriers to obtaining housing because of race, color, sex, religion, handicap, familial status or national origin.

Recreational features, structural details and amenities described herein are subject to change periodically. The illustrations included herein are artist renderings of proposed improvements. Any offers contained herein are not directed to residents in any state in which a registration is required but in which registration requirements have not yet been met, including, but not limited to, New Jersey. Recreational features and amenities described herein are subject to change periodically. The illustrations included herein are artist renderings of proposed improvements.

WARNING: THE CALIFORNIA DEPARTMENT OF REAL ESTATE HAS NOT EXAMINED THIS OFFERING, INCLUDING, BUT NOT LIMITED TO, THE CONDITION OF TITLE, THE STATUS OF BLANKET LIENS ON THE PROJECT (IF ANY), ARRANGEMENTS TO ASSURE PROJECT COMPLETION, ESCROW PRACTICES, CONTROL OVER PROJECT MANAGEMENT, RACIALLY DISCRIMINATORY PRACTICES (IF ANY), TERMS, CONDITIONS, AND PRICE OF THE OFFER, CONTROL OVER ANNUAL ASSESSMENTS (IF ANY), OR THE AVAILABILITY OF WATER, SERVICES, UTILITIES, OR IMPROVEMENTS. IT MAY BE ADVISABLE FOR YOU TO CONSULT AN ATTORNEY OR OTHER KNOWLEDGEABLE PROFESSIONAL WHO IS FAMILIAR WITH REAL ESTATE AND A LAW IN THE COUNTRY WHERE THIS SUBDIVISION IS SITUATED.

Waldorf Astoria is a registered trademark of Hilton International Holding LLC, an affiliate of Hilton Worldwide Holdings Inc. (together with its affiliates, "Hilton"). The Waldorf Astoria Residences Texas Hill Country and Waldorf Astoria Resort Villas Texas Hill Country (the "Residences") are not owned, developed or sold by Hilton, and Hilton does not make any representations, warranties or guaranties whatsoever with respect to the Residences or related development. Wine Country Hospitality Partners, LLC ("Developer") uses the Waldorf Astoria brand name and certain Waldorf Astoria trademarks (the "Trademarks") under a limited, non-exclusive, non-transferable license from Hilton. The license may be terminated or may expire without renewal, in which case the Residences will not be identified as a Waldorf Astoria branded project and the Developer will not have any rights to use the Trademarks.



BLUEBELL ESTATE PLAN

SIZE

3,210 AC SF

1,253 Non-AC SF

4,464 SF TOTAL

DETAILS

3 Bedrooms

3.5 Bathrooms

1 Flex Room

FEATURES

Study

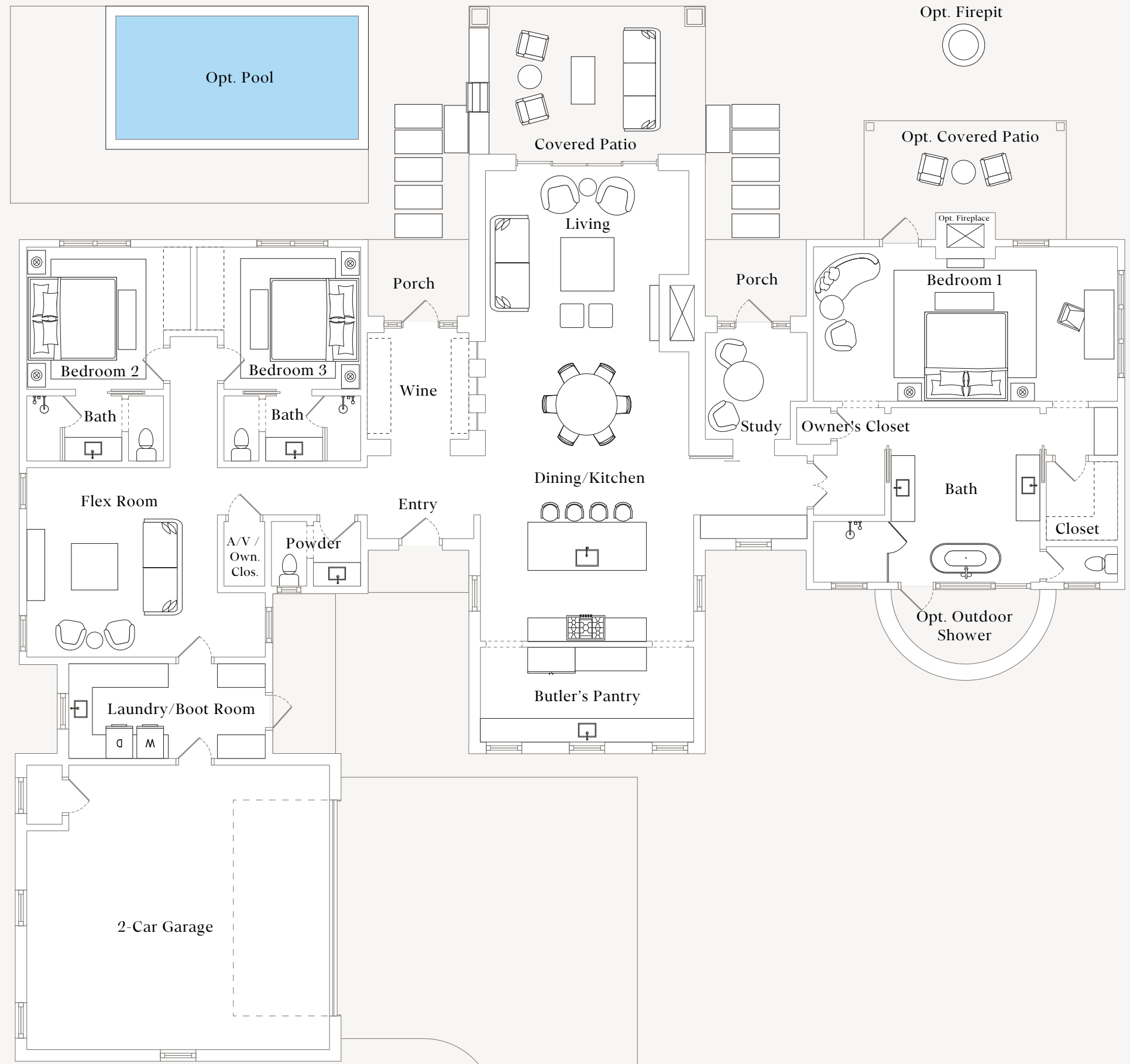
Wine Room

Wine Porch

Flex Room w/ Optional J&J Bath

Butler's Pantry

Seamless Indoor / Outdoor Living



Statement: We are pledged to the letter and spirit of U.S. policy for the achievement of equal housing throughout the nation. We encourage and support an affirmative advertising, marketing and sales program in which there are no barriers to obtaining housing because of race, color, sex, religion, handicap, familial status or national origin.

Recreational features, structural details and amenities described herein are subject to change periodically. The illustrations included herein are artist renderings of proposed improvements. Any offers contained herein are not directed to residents in any state in which a registration is required but in which registration requirements have not yet been met, including, but not limited to, New Jersey. Recreational features and amenities described herein are subject to change periodically. The illustrations included herein are artist renderings of proposed improvements.

WARNING: THE CALIFORNIA DEPARTMENT OF REAL ESTATE HAS NOT EXAMINED THIS OFFERING, INCLUDING, BUT NOT LIMITED TO, THE CONDITION OF TITLE, THE STATUS OF BLANKET LIENS ON THE PROJECT (IF ANY), ARRANGEMENTS TO ASSURE PROJECT COMPLETION, ESCROW PRACTICES, CONTROL OVER PROJECT MANAGEMENT, RACIALLY DISCRIMINATORY PRACTICES (IF ANY), TERMS, CONDITIONS, AND PRICE OF THE OFFER, CONTROL OVER ANNUAL ASSESSMENTS (IF ANY), OR THE AVAILABILITY OF WATER, SERVICES, UTILITIES, OR IMPROVEMENTS. IT MAY BE ADVISABLE FOR YOU TO CONSULT AN ATTORNEY OR OTHER KNOWLEDGEABLE PROFESSIONAL WHO IS FAMILIAR WITH REAL ESTATE AND A LAW IN THE COUNTRY WHERE THIS SUBDIVISION IS SITUATED.

Waldorf Astoria is a registered trademark of Hilton International Holding LLC, an affiliate of Hilton Worldwide Holdings Inc. (together with its affiliates, "Hilton"). The Waldorf Astoria Residences Texas Hill Country and Waldorf Astoria Resort Villas Texas Hill Country (the "Residences") are not owned, developed or sold by Hilton, and Hilton does not make any representations, warranties or guaranties whatsoever with respect to the Residences or related development. Wine Country Hospitality Partners, LLC ("Developer") uses the Waldorf Astoria brand name and certain Waldorf Astoria trademarks (the "Trademarks") under a limited, non-exclusive, non-transferable license from Hilton. The license may be terminated or may expire without renewal, in which case the Residences will not be identified as a Waldorf Astoria branded project and the Developer will not have any rights to use the Trademarks.

BLUEBONNET
ESTATE PLAN

SIZE

3,499 AC SF
1,263 Non-AC SF
4,763 SF TOTAL

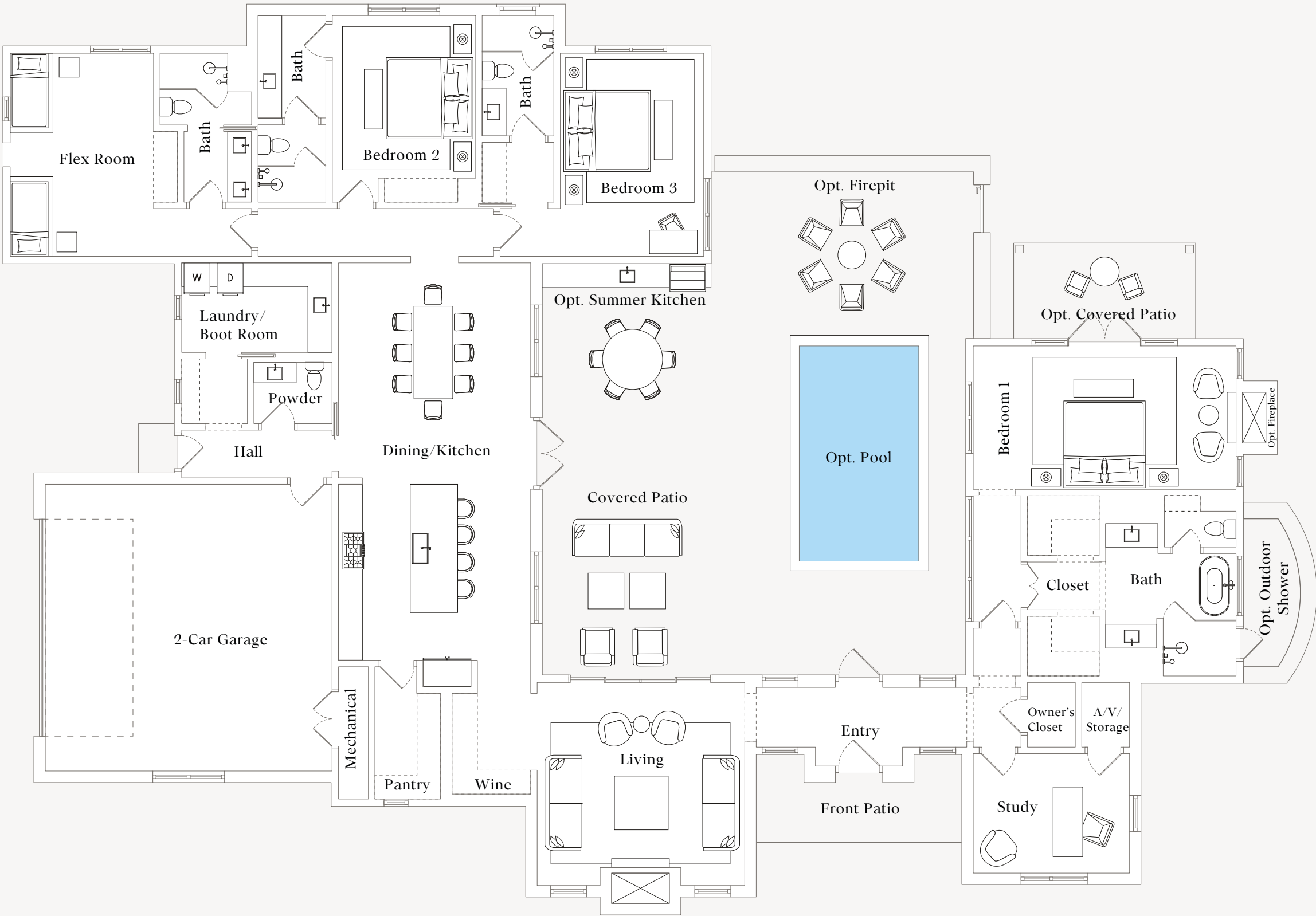
DETAILS

3 Bedrooms
4.5 Bathrooms
1 Flex Room

FEATURES

Courtyard Focused
Study
Wine Room
Flex Room

Seamless Indoor/Outdoor Living



Statement: We are pledged to the letter and spirit of U.S. policy for the achievement of equal housing throughout the nation. We encourage and support an affirmative advertising, marketing and sales program in which there are no barriers to obtaining housing because of race, color, sex, religion, handicap, familial status or national origin.

Recreational features, structural details and amenities described herein are subject to change periodically. The illustrations included herein are artist renderings of proposed improvements. Any offers contained herein are not directed to residents in any state in which a registration is required but in which registration requirements have not yet been met, including, but not limited to, New Jersey. Recreational features and amenities described herein are subject to change periodically. The illustrations included herein are artist renderings of proposed improvements.

WARNING: THE CALIFORNIA DEPARTMENT OF REAL ESTATE HAS NOT EXAMINED THIS OFFERING, INCLUDING, BUT NOT LIMITED TO, THE CONDITION OF TITLE, THE STATUS OF BLANKET LIENS ON THE PROJECT (IF ANY), ARRANGEMENTS TO ASSURE PROJECT COMPLETION, ESCROW PRACTICES, CONTROL OVER PROJECT MANAGEMENT, RACIALLY DISCRIMINATORY PRACTICES (IF ANY), TERMS, CONDITIONS, AND PRICE OF THE OFFER, CONTROL OVER ANNUAL ASSESSMENTS (IF ANY), OR THE AVAILABILITY OF WATER, SERVICES, UTILITIES, OR IMPROVEMENTS. IT MAY BE ADVISABLE FOR YOU TO CONSULT AN ATTORNEY OR OTHER KNOWLEDGEABLE PROFESSIONAL WHO IS FAMILIAR WITH REAL ESTATE AND A LAW IN THE COUNTRY WHERE THIS SUBDIVISION IS SITUATED.

Waldorf Astoria is a registered trademark of Hilton International Holding LLC, an affiliate of Hilton Worldwide Holdings Inc. (together with its affiliates, "Hilton"). The Waldorf Astoria Residences Texas Hill Country and Waldorf Astoria Resort Villas Texas Hill Country (the "Residences") are not owned, developed or sold by Hilton, and Hilton does not make any representations, warranties or guaranties whatsoever with respect to the Residences or related development. Wine Country Hospitality Partners, LLC ("Developer") uses the Waldorf Astoria brand name and certain Waldorf Astoria trademarks (the "Trademarks") under a limited, non-exclusive, non-transferable license from Hilton. The license may be terminated or may expire without renewal, in which case the Residences will not be identified as a Waldorf Astoria branded project and the Developer will not have any rights to use the Trademarks.



SIZE

3,978 AC SF

1,398 Non-AC SF

5,376 SF TOTAL

DETAILS

4 Bedrooms

4.5 Bathrooms

FEATURES

Courtyard Focused

Study

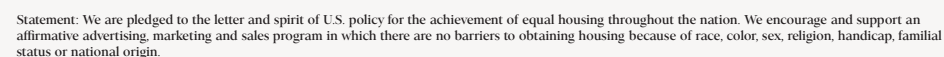
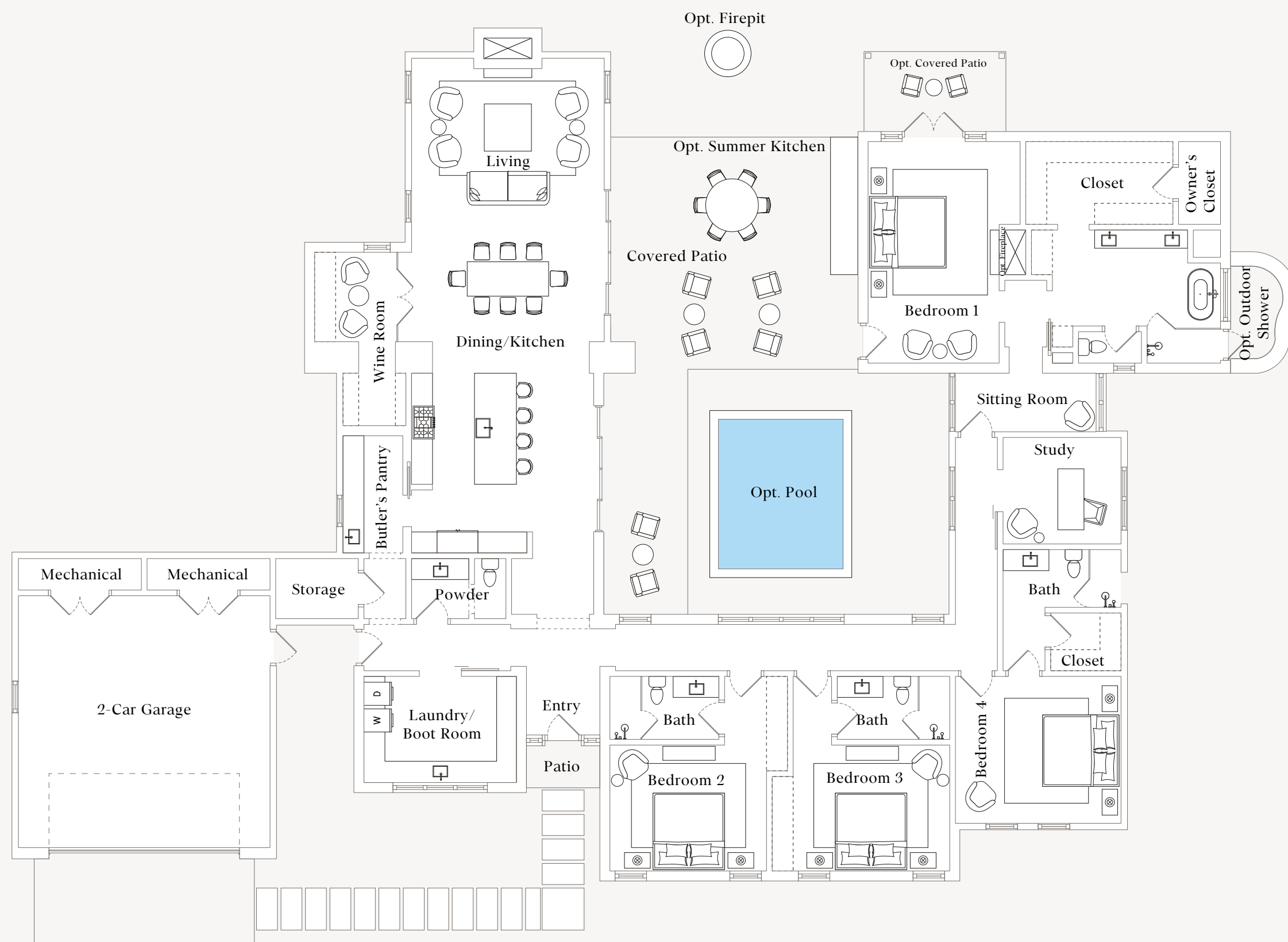
Wine Room

Large Utility/Boot Room

Primary Lounge w/ Coffee Bar

Option for Summer Kitchen

Seamless Indoor/Outdoor Living



Recreational features, structural details and amenities described herein are subject to change periodically. The illustrations included herein are artist renderings of proposed improvements. Any offers contained herein are not directed to residents in any state in which a registration is required but in which registration requirements have not yet been met, including, but not limited to, New Jersey. Recreational features and amenities described herein are subject to change periodically. The illustrations included herein are artist renderings of proposed improvements.

WARNING: THE CALIFORNIA DEPARTMENT OF REAL ESTATE HAS NOT EXAMINED THIS OFFERING, INCLUDING, BUT NOT LIMITED TO, THE CONDITION OF TITLE, THE STATUS OF BLANKET LIENS ON THE PROJECT (IF ANY), ARRANGEMENTS TO ASSURE PROJECT COMPLETION, ESCROW PRACTICES, CONTROL OVER PROJECT MANAGEMENT, RACIALLY DISCRIMINATORY PRACTICES (IF ANY), TERMS, CONDITIONS, AND PRICE OF THE OFFER, CONTROL OVER ANNUAL ASSESSMENTS (IF ANY), OR THE AVAILABILITY OF WATER, SERVICES, UTILITIES, OR IMPROVEMENTS. IT MAY BE ADVISABLE FOR YOU TO CONSULT AN ATTORNEY OR OTHER KNOWLEDGEABLE PROFESSIONAL WHO IS FAMILIAR WITH REAL ESTATE AND A LAW IN THE COUNTRY WHERE THIS SUBDIVISION IS SITUATED.

Waldorf Astoria is a registered trademark of Hilton International Holding LLC, an affiliate of Hilton Worldwide Holdings Inc. (together with its affiliates, "Hilton"). The Waldorf Astoria Residences Texas Hill County and Waldorf Astoria Resort Villas Texas Hill Country (the "Residences") are not owned, developed or sold by Hilton, and Hilton does not make any representations, warranties or guaranties whatsoever with respect to the Residences or related development. Wine Country Hospitality Partners, LLC ("Developer") uses the Waldorf Astoria brand name and certain Waldorf Astoria trademarks (the "Trademarks") under a limited, non-exclusive, non-transferable license from Hilton. The license may be terminated or may expire without renewal, in which case the Residences will not be identified as a Waldorf Astoria branded project and the Developer will not have any rights to use the Trademarks.



FOXGLOVE ESTATE PLAN

SIZE

4,384 AC SF

1,908 Non-AC SF

6,292 SF TOTAL

DETAILS

4 Bedrooms

4.5 Bathrooms

FEATURES

Courtyard Focused

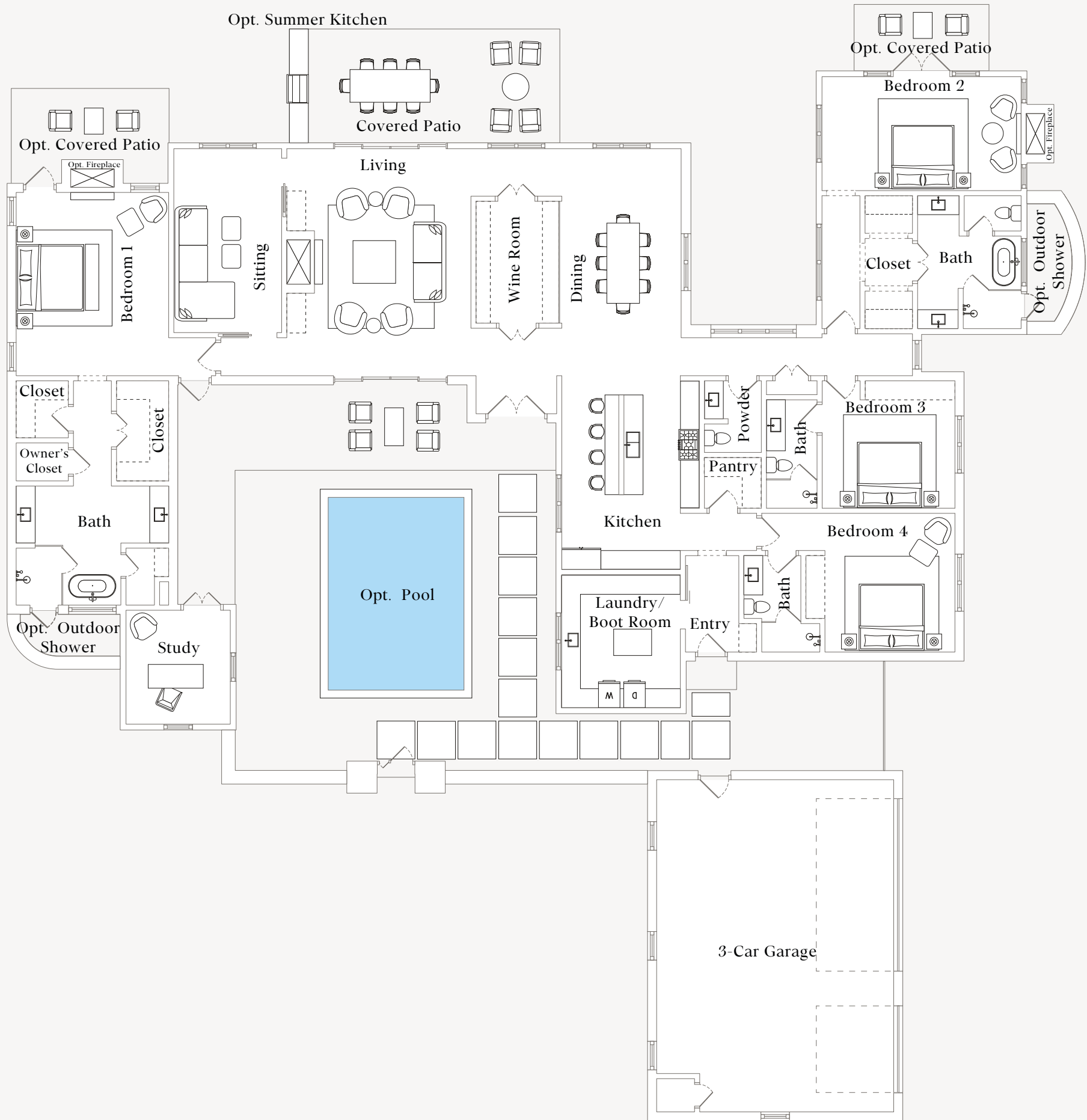
Detached Study

Wine Room

Bar Area

Seamless Indoor/Outdoor Living

Primary Lounge



Statement: We are pledged to the letter and spirit of U.S. policy for the achievement of equal housing throughout the nation. We encourage and support an affirmative advertising, marketing and sales program in which there are no barriers to obtaining housing because of race, color, sex, religion, handicap, familial status or national origin.

Recreational features, structural details and amenities described herein are subject to change periodically. The illustrations included herein are artist renderings of proposed improvements. Any offers contained herein are not directed to residents in any state in which a registration is required but in which registration requirements have not yet been met, including, but not limited to, New Jersey. Recreational features and amenities described herein are subject to change periodically. The illustrations included herein are artist renderings of proposed improvements.

WARNING: THE CALIFORNIA DEPARTMENT OF REAL ESTATE HAS NOT EXAMINED THIS OFFERING, INCLUDING, BUT NOT LIMITED TO, THE CONDITION OF TITLE, THE STATUS OF BLANKET LIENS ON THE PROJECT (IF ANY), ARRANGEMENTS TO ASSURE PROJECT COMPLETION, ESCROW PRACTICES, CONTROL OVER PROJECT MANAGEMENT, RACIALLY DISCRIMINATORY PRACTICES (IF ANY), TERMS, CONDITIONS, AND PRICE OF THE OFFER, CONTROL OVER ANNUAL ASSESSMENTS (IF ANY), OR THE AVAILABILITY OF WATER, SERVICES, UTILITIES, OR IMPROVEMENTS. IT MAY BE ADVISABLE FOR YOU TO CONSULT AN ATTORNEY OR OTHER KNOWLEDGEABLE PROFESSIONAL WHO IS FAMILIAR WITH REAL ESTATE AND A LAW IN THE COUNTRY WHERE THIS SUBDIVISION IS SITUATED.

Waldorf Astoria is a registered trademark of Hilton International Holding LLC, an affiliate of Hilton Worldwide Holdings Inc. (together with its affiliates, "Hilton"). The Waldorf Astoria Residences Texas Hill Country and Waldorf Astoria Resort Villas Texas Hill Country (the "Residences") are not owned, developed or sold by Hilton, and Hilton does not make any representations, warranties or guaranties whatsoever with respect to the Residences or related development. Wine Country Hospitality Partners, LLC ("Developer") uses the Waldorf Astoria brand name and certain Waldorf Astoria trademarks (the "Trademarks") under a limited, non-exclusive, non-transferable license from Hilton. The license may be terminated or may expire without renewal, in which case the Residences will not be identified as a Waldorf Astoria branded project and the Developer will not have any rights to use the Trademarks.

WINECUP
ESTATE PLAN

SIZE

3,399 AC SF

1,537 Non-AC SF

4,936 SF TOTAL

DETAILS

3 Bedrooms

4.5 Bathrooms

1 Flex Room

FEATURES

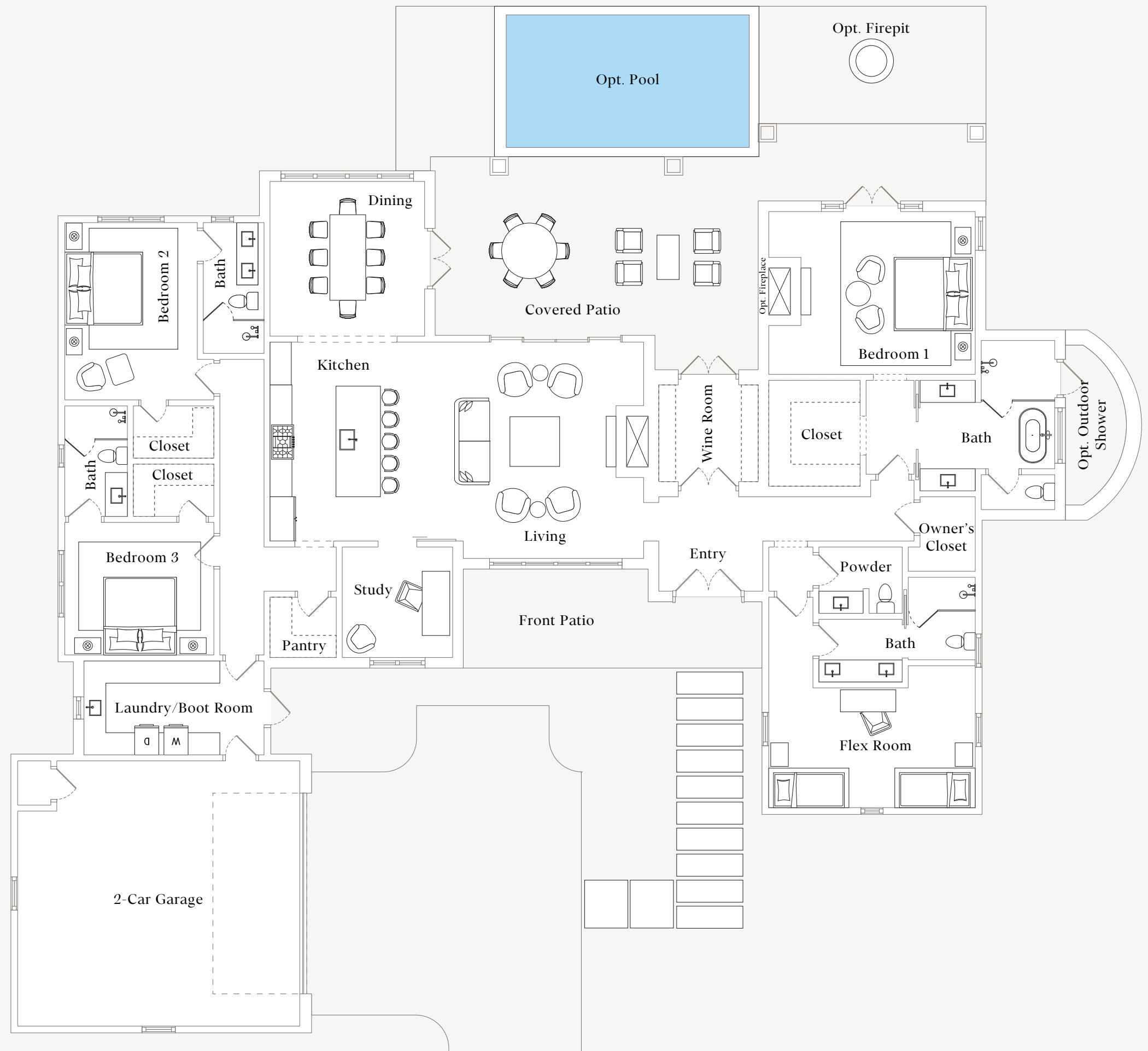
Study

Wine Room

Flex Room with Ensuite

Seamless Indoor/Outdoor Living

Large Covered Patio



Statement: We are pledged to the letter and spirit of U.S. policy for the achievement of equal housing throughout the nation. We encourage and support an affirmative advertising, marketing and sales program in which there are no barriers to obtaining housing because of race, color, sex, religion, handicap, familial status or national origin.

Recreational features, structural details and amenities described herein are subject to change periodically. The illustrations included herein are artist renderings of proposed improvements. Any offers contained herein are not directed to residents in any state in which a registration is required but in which registration requirements have not yet been met, including, but not limited to, New Jersey. Recreational features and amenities described herein are subject to change periodically. The illustrations included herein are artist renderings of proposed improvements.

WARNING: THE CALIFORNIA DEPARTMENT OF REAL ESTATE HAS NOT EXAMINED THIS OFFERING, INCLUDING, BUT NOT LIMITED TO, THE CONDITION OF TITLE, THE STATUS OF BLANKET LIENS ON THE PROJECT (IF ANY), ARRANGEMENTS TO ASSURE PROJECT COMPLETION, ESCROW PRACTICES, CONTROL OVER PROJECT MANAGEMENT, RACIALLY DISCRIMINATORY PRACTICES (IF ANY), TERMS, CONDITIONS, AND PRICE OF THE OFFER, CONTROL OVER ANNUAL ASSESSMENTS (IF ANY), OR THE AVAILABILITY OF WATER, SERVICES, UTILITIES, OR IMPROVEMENTS. IT MAY BE ADVISABLE FOR YOU TO CONSULT AN ATTORNEY OR OTHER KNOWLEDGEABLE PROFESSIONAL WHO IS FAMILIAR WITH REAL ESTATE AND A LAW IN THE COUNTRY WHERE THIS SUBDIVISION IS SITUATED.

Waldorf Astoria is a registered trademark of Hilton International Holding LLC, an affiliate of Hilton Worldwide Holdings Inc. (together with its affiliates, "Hilton"). The Waldorf Astoria Residences Texas Hill Country and Waldorf Astoria Resort Villas Texas Hill Country (the "Residences") are not owned, developed or sold by Hilton, and Hilton does not make any representations, warranties or guaranties whatsoever with respect to the Residences or related development. Wine Country Hospitality Partners, LLC ("Developer") uses the Waldorf Astoria brand name and certain Waldorf Astoria trademarks (the "Trademarks") under a limited, non-exclusive, non-transferable license from Hilton. The license may be terminated or may expire without renewal, in which case the Residences will not be identified as a Waldorf Astoria branded project and the Developer will not have any rights to use the Trademarks.



SIZE

2,656 AC

1,153 Non-AC

3,808 Total

DETAILS

3 Bedrooms

4.5 Bathrooms

FEATURES

Flex Room with Ensuite

Large Covered Patio

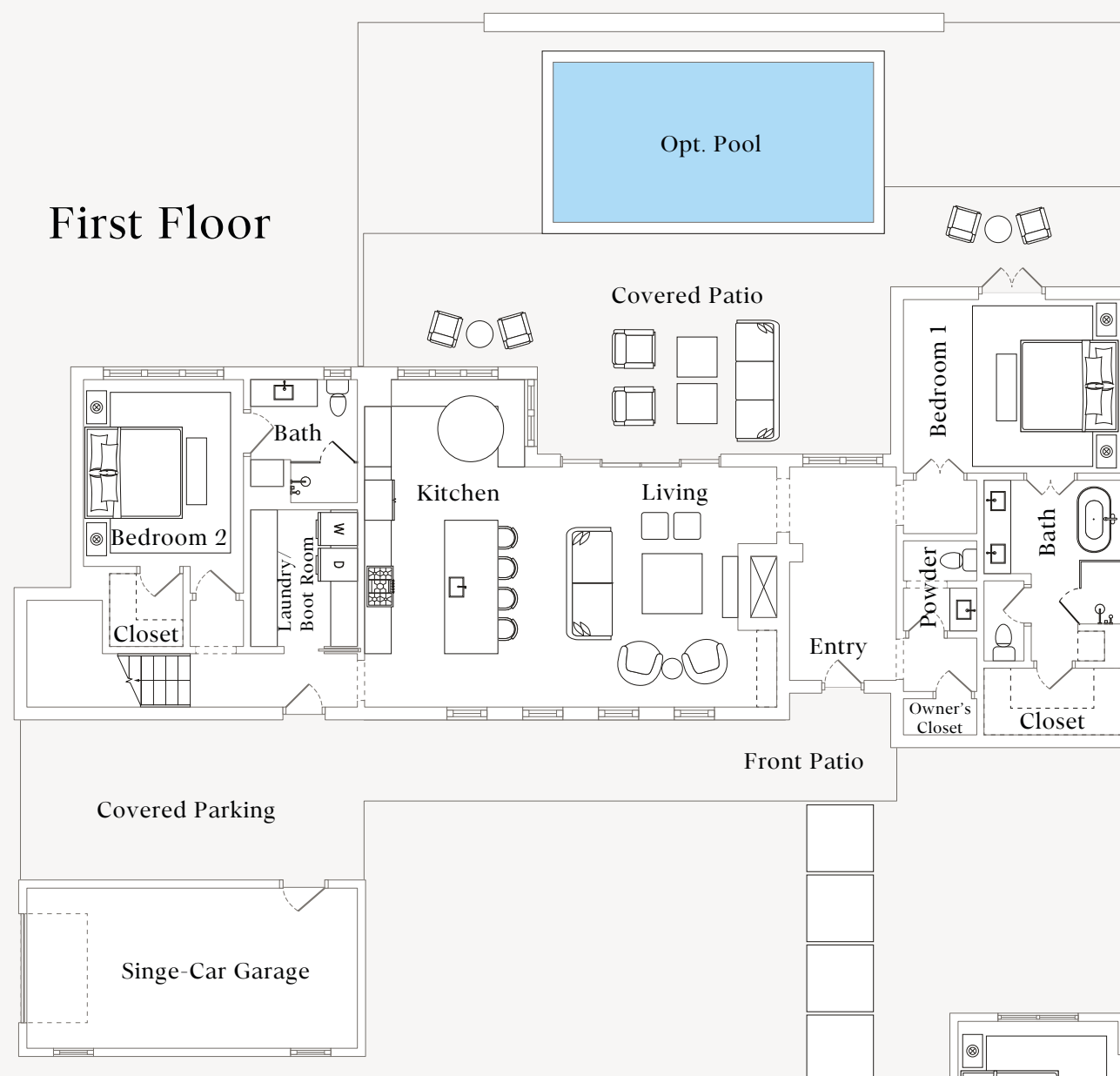
Owner's Closet

Two-Story Living

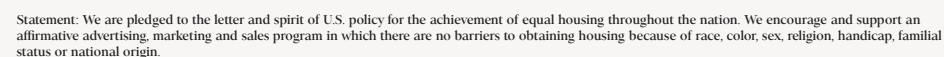
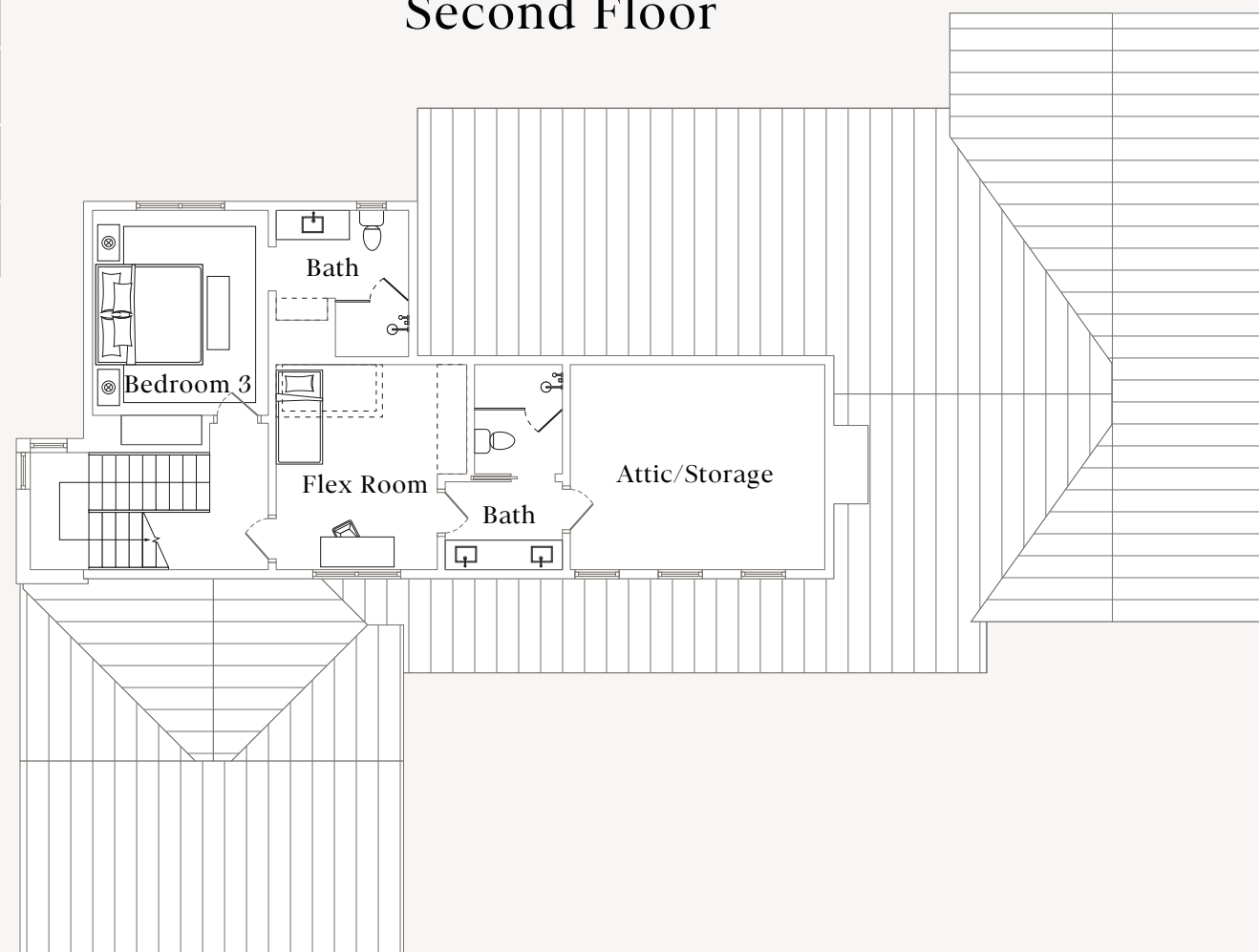
Garage & Covered Parking

Seamless Indoor/Outdoor Living

First Floor



Second Floor



Recreational features, structural details and amenities described herein are subject to change periodically. The illustrations included herein are artist renderings of proposed improvements. Any offers contained herein are not directed to residents in any state in which a registration is required but in which registration requirements have not yet been met, including, but not limited to, New Jersey. Recreational features and amenities described herein are subject to change periodically. The illustrations included herein are artist renderings of proposed improvements.

WARNING: THE CALIFORNIA DEPARTMENT OF REAL ESTATE HAS NOT EXAMINED THIS OFFERING, INCLUDING, BUT NOT LIMITED TO, THE CONDITION OF TITLE, THE STATUS OF BLANKET LIENS ON THE PROJECT (IF ANY), ARRANGEMENTS TO ASSURE PROJECT COMPLETION, ESCROW PRACTICES, CONTROL OVER PROJECT MANAGEMENT, RACIALLY DISCRIMINATORY PRACTICES (IF ANY), TERMS, CONDITIONS, AND PRICE OF THE OFFER, CONTROL OVER ANNUAL ASSESSMENTS (IF ANY), OR THE AVAILABILITY OF WATER, SERVICES, UTILITIES, OR IMPROVEMENTS. IT MAY BE ADVISABLE FOR YOU TO CONSULT AN ATTORNEY OR OTHER KNOWLEDGEABLE PROFESSIONAL WHO IS FAMILIAR WITH REAL ESTATE AND A LAW IN THE COUNTRY WHERE THIS SUBDIVISION IS SITUATED.

Waldorf Astoria is a registered trademark of Hilton International Holding LLC, an affiliate of Hilton Worldwide Holdings Inc. (together with its affiliates, "Hilton"). The Waldorf Astoria Residences Texas Hill County and Waldorf Astoria Resort Villas Texas Hill Country (the "Residences") are not owned, developed or sold by Hilton, and Hilton does not make any representations, warranties or guaranties whatsoever with respect to the Residences or related development. Wine Country Hospitality Partners, LLC ("Developer") uses the Waldorf Astoria brand name and certain Waldorf Astoria trademarks (the "Trademarks") under a limited, non-exclusive, non-transferable license from Hilton. The license may be terminated or may expire without renewal, in which case the Residences will not be identified as a Waldorf Astoria branded project and the Developer will not have any rights to use the Trademarks.



(830) 888-9200

sales@WaldorfAstoriaResidencesTexasHillCountry.com

www.WaldorfAstoriaResidencesTexasHillCountry.com